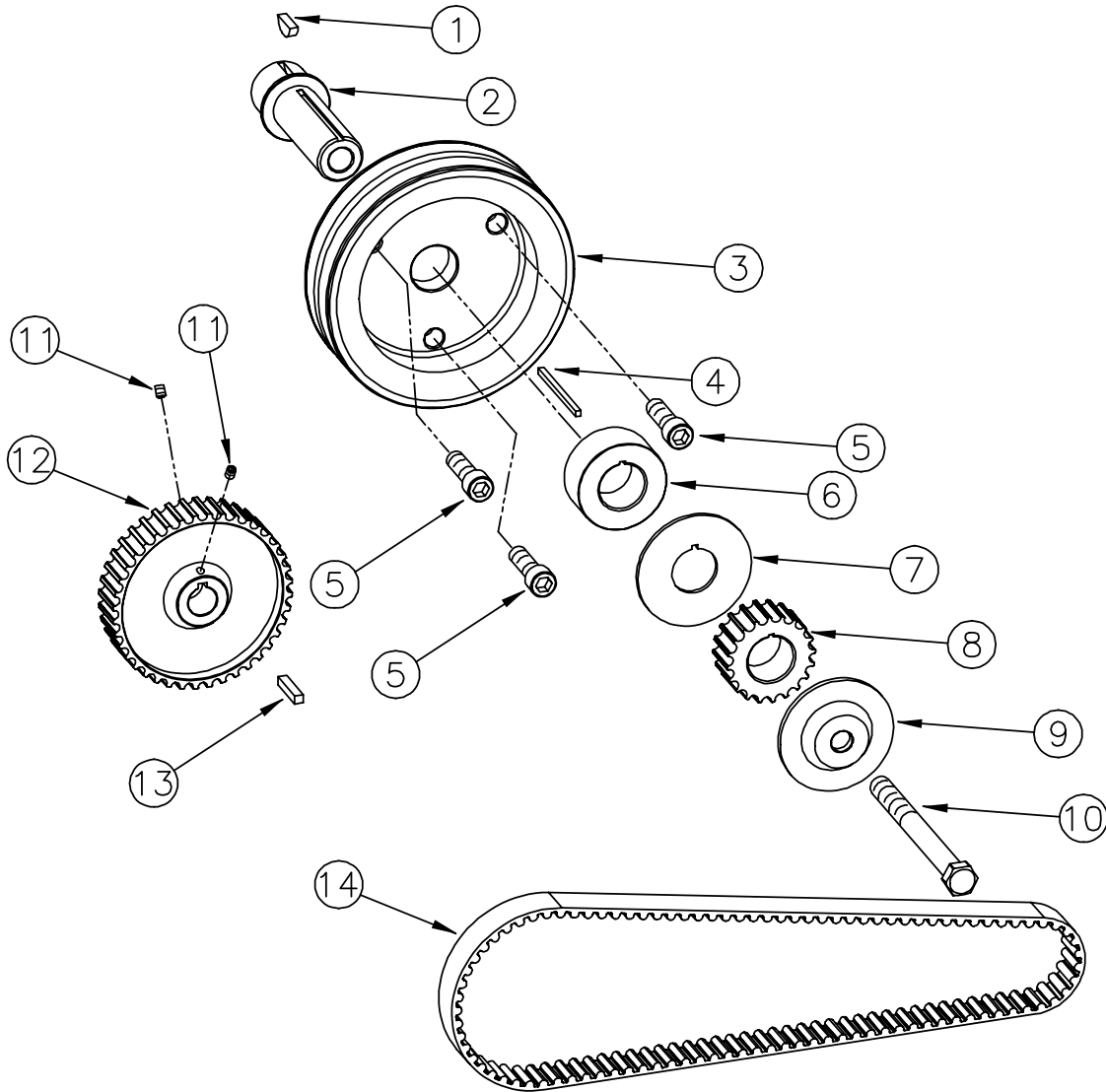


Technical Information

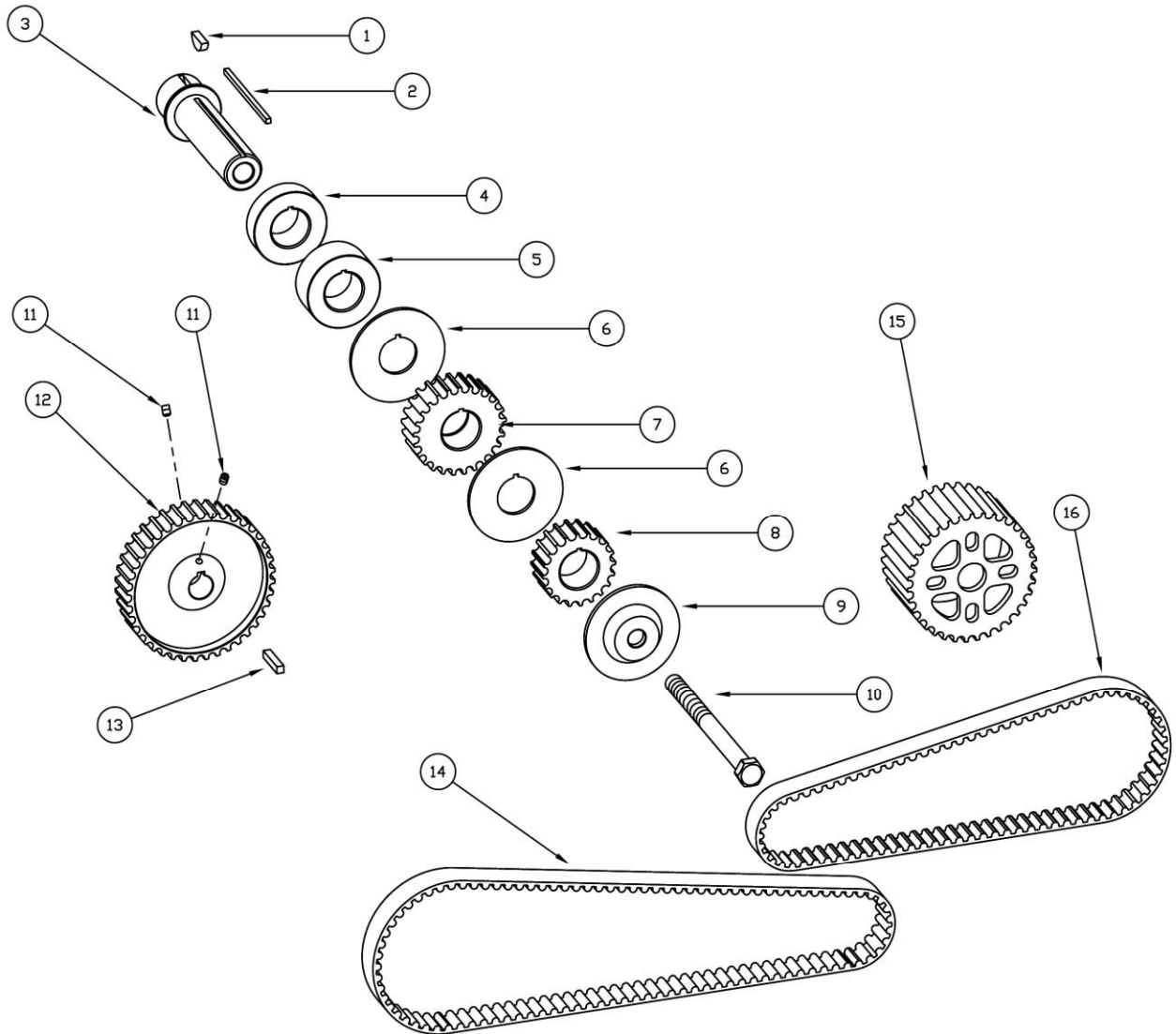
KSD1025 HTD Single Belt Drive Kit



ITEM	DESCRIPTION	PART#
1.	WOODRUFF KEY	KSM 1030-009
2.	MANDREL	KSD 1015-270
3.	W/P PULLEY	KSD 1022
4.	1/8 STRAIGHT KEY	KSM 1028-212
5.	3/8 X 24 SHCS (3 REQ)	KSM 1057-125
6.	DRIVE PULLEY SPACER	KSD 1016
7.	DRIVE PULLEY SEPERATOR	KSD 1020
8.	20 TOOTH PULLEY	KSD 1017
9.	MANDREL DRIVE CAP	KSD 1021
10.	7/16 X 20 X 4 3/4" HEX BOLT	KSM 1012-475
11.	10-24 SHCS (2 REQ)	KSM 1008-025
12.	40 TOOTH PULLEY	KSD 1019
13.	3/16 STRAIGHT KEY	KSM 1029-100
14.	H.T.D. BELT (800-8M-20)	KSM 1058-800

Technical Information

KSD1039 HTD Dual Belt Drive Kit



ITEM	DESCRIPTION.....	PART#
1.	WOODRUFF KEY.....	KSM 1030-009
2.	1/8 STRAIGHT KEY.....	KSM 1028-312
3.	MANDREL.....	KSD 1015-368
4.	DRIVE PULLEY SPACER - SHORT.....	KSD 1016S
5.	DRIVE PULLEY SPACER.....	KSD 1016
6.	DRIVE PULLEY SEPERATOR (2 REQ).....	KSD 1020
7.	25 TOOTH PULLEY.....	KSD 1037
8.	20 TOOTH PULLEY.....	KSD 1017
9.	MANDREL DRIVE CAP.....	KSD 1021
10.	7/16 X 20 X 5 1/2" HEX BOLT.....	KSM 1012-550
11.	10-24 SHCS (2 REQ).....	KSM 1008-025
12.	40 TOOTH PULLEY.....	KSD 1019
13.	3/16 STRAIGHT KEY.....	KSM 1029-100
14.	HTD BELT (800-8M-20).....	KSM 1058-800
15.	35 TOOTH WATER PUMP PULLEY.....	KSD 1036
16.	HTD BELT (600-8M-20).....	KSM 1058-600

STEERING GEARS

TANDEM PUMPS

FUEL PUMPS

POWER STEERING PUMPS

ACCESSORIES & FLUIDS

WATER PUMPS FRONT COVERS

SERVICE

TECHNICAL INFO