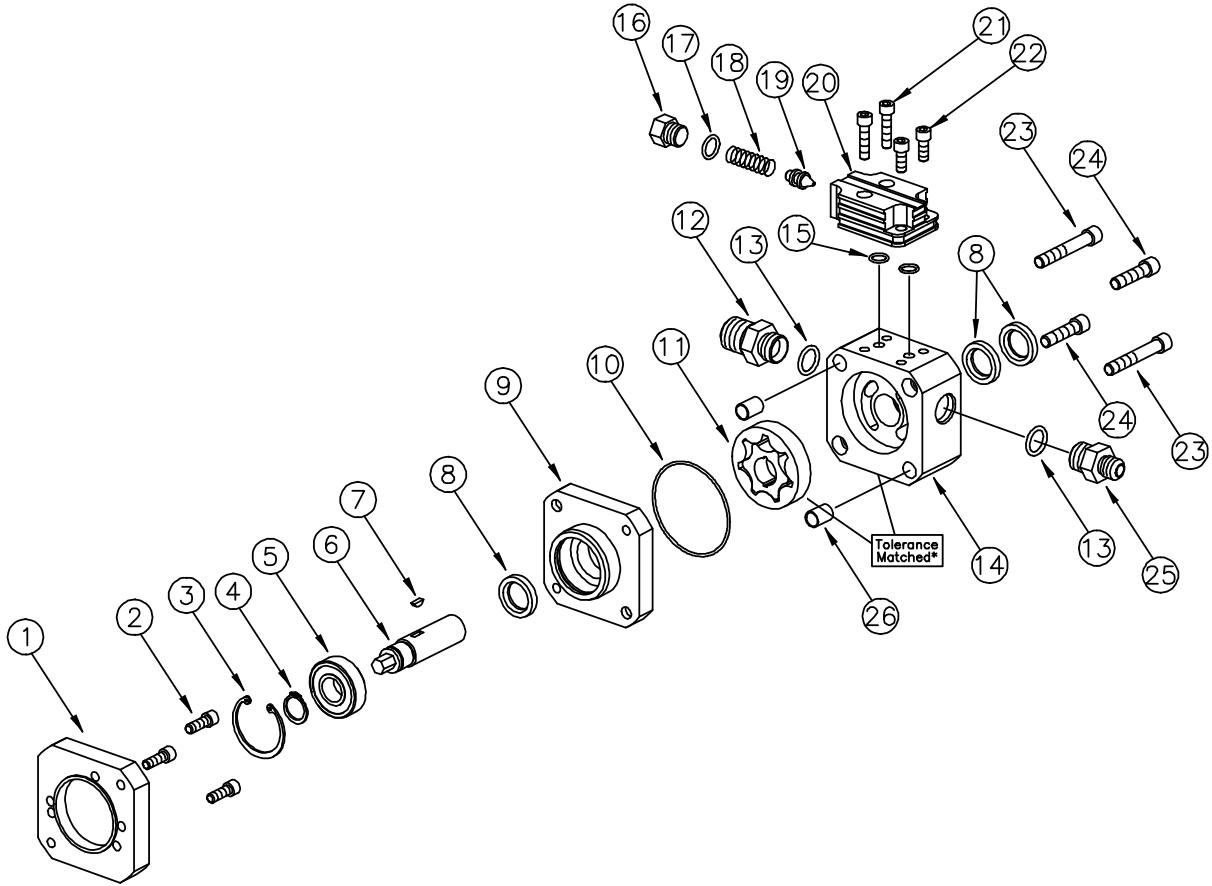


# Technical Information

## KSC1030-001 Hex Drive Standard Rotation Power Steering Pump



ITEM	DESCRIPTION .....	PART #
1.	PUMP MOUNTING ADAPTER .....	KSC1019
2.	1/4 20 X 3/4" SHCS MGF. ADPT BOLT (2 REQ) .....	KSM1003-075
3.	SHAFT & BEARING RETAINING RING .....	KSM1026-156
4.	DRIVE SHAFT BEARING RETAINING RING .....	KSM1027-066
5.	DRIVE SHAFT BEARING .....	KSM1039
6.	3/8" HEX DRIVE SHAFT .....	KSC1027
7.	WOODRUFF KEY DRIVE .....	KSM1030-213
8.	SHAFT SEAL (3 REQ) .....	KSM1037
9.	BEARING SECTION .....	KSC1028
10.	BEARING SECTION O-RING .....	KSM1020-038
11.*	GEROTOR PUMPING ASSEMBLY .....	KSM1023-500
12.	INLET FITTING #8 ORB #10 JIC .....	KSM1059
13.	#8 O-RING (2 REQ) .....	KSM1021-908
14.*	DOUBLE ENDED PUMP BODY .....	KSC1017
15.	MOUNTED VALVE MTG O-RING .....	KSM1020-013
16.	RELIEF VALVE CAP #6 ORB .....	KSM1019
17.	#6 O-RING .....	KSM1021-906
18.	RELIEF VALVE SPRING .....	KSC1023
19.	RELIEF VALVE POPPET .....	KSC1031
20.	MOUNTED VALVE BODY .....	KSC1025
21.	1/4 28 X 1" SHCS MOUNTED VALVE BOLT (2 REQ) .....	KSM1004-100
22.	1/4 28 X 5/8" SHCS MOUNTED BOLT (2 REQ) .....	KSM1004-062
23.	5/16 18 X 2" SHCS MOUNTING BOLT (2 REQ) .....	KSM1005-200
24.	5/16 18 X 1 1/4" SHCS ASSY BOLT (2 REQ) .....	KSM1005-125
25.	PRESSURE FITTING#8 ORB #6 JIC .....	KSM1017
26.	HOLLOW DOWEL (2 REQ) .....	KSC1033-060

\*These items are tolerance matched and are recommended to be purchased as a set.

Pump Rebuild / Seal Kit for SN's Up To 5266 (Includes #5, #7, #8, #10, #15).....KSC1038B  
 Pump Rebuild / Seal Kit for SN's 5267 & Up (Includes #5, #7, #8, #10, #15).....KSC1039B

STEERING GEARS

TANDEM PUMPS

FUEL PUMPS

POWER STEERING PUMPS

ACCESSORIES & FLUIDS

WATER PUMPS FRONT COVERS

SERVICE

TECHNICAL INFO