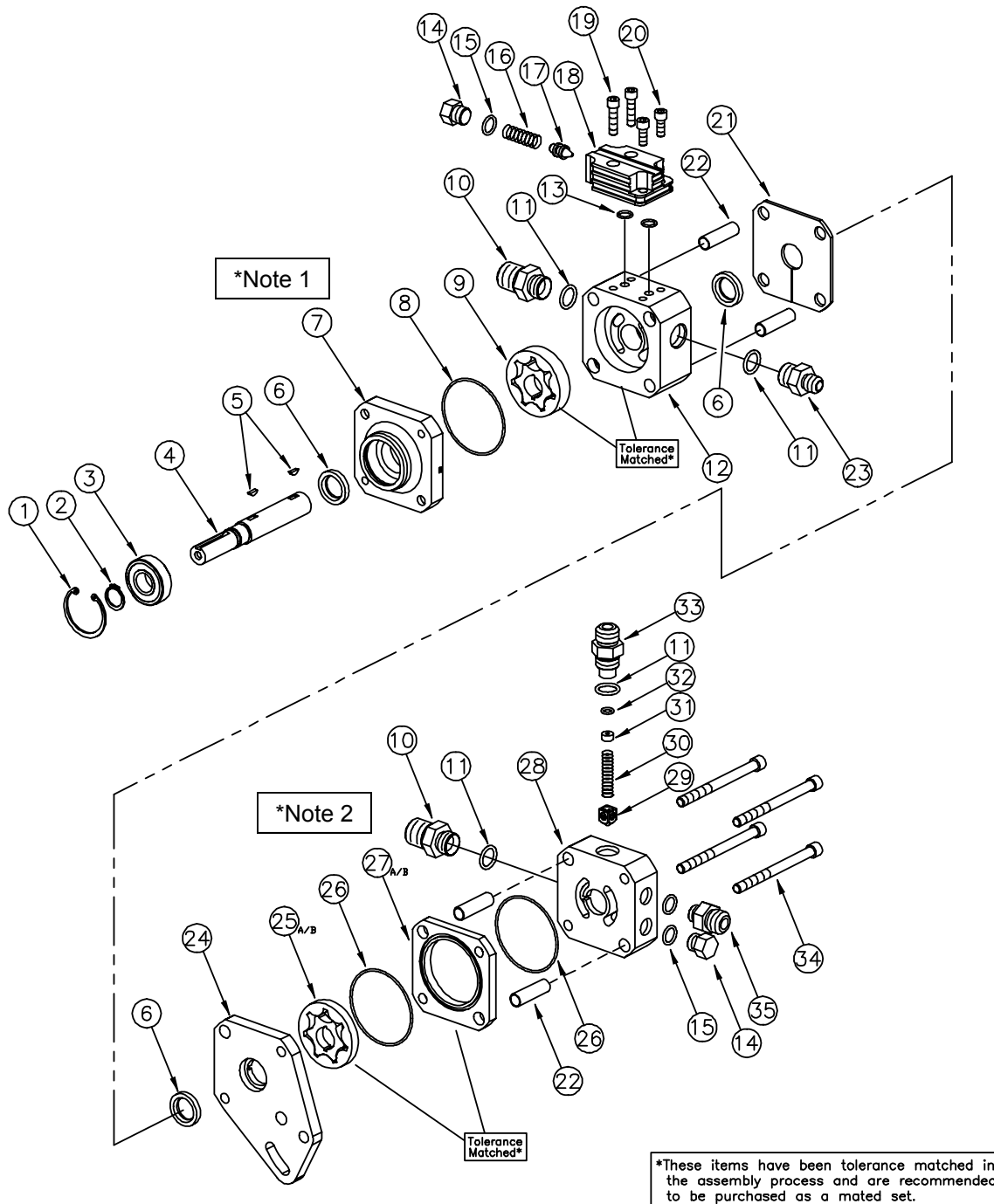


Technical Information

KSC1061-XXX Belt Drive Tandem Pump



*It is critical to assemble the components in the correct orientation as shown in order to avoid seal damage.

*Note 1: Pump SN# should be oriented towards top of pump with "notch" positioned towards pressure fitting.

*Note 2: Fuel section eccentric should be located towards top of pump as shown (Item #27).

Technical Information

ITEM	DESCRIPTION.....	PART #
1.	SHAFT & BEARING RETAINING RING.....	KSM1026-156
2.	DRIVE SHAFT BEARING RETAINING RING.....	KSM1027-066
3.	DRIVE SHAFT BALL BEARING.....	KSM1039
4.	BELT DRIVE SHAFT.....	KSC1007
5.	PUMP WOODRUFF KEY (2 REQ).....	KSM1030-213
6.	SHAFT SEALS (3 REQ).....	KSM1037 (S/N UP TO 5266) KSM1110 (S/N 5267 AND LATER)
7.	P/S BEARING SECTION.....	KSC1016
8.	P/S BEARING SECTION O-RING.....	KSM1020-038
9.*	P/S GEROTER PUMPING ASSEMBLY.....	KSM1023-500
10.	#8 ORB #10 JIC.....	KSM1059
11.	#8 O-RING (3 REQ).....	KSM1021-908
12.*	POWER STEERING PUMP BODY.....	KSC1010
13.	MOUNTED VALVE MTG O-RING (2 REQ).....	KSM1020-013
14.	RELIEF VALVE CAP (6 ORB).....	KSM1019
15.	#6 O-RING (3 REQ).....	KSM1021-906
16.	RELIEF VALVE SPRING.....	KSC1023
17.	RELIEF VALVE POPPET.....	KSC1031
18.	RELIEF VALVE BODY.....	KSC1025
19.	RELIEF VALVE BODY BOLT (2 REQ).....	KSM1004-100 1/4 28 X 1 SHCS
20.	RELIEF VALVE BODY BOLT (2 REQ).....	KSM1004-062 1/4 28 X 5/8 SHCS
21.	INSULATOR PLATE.....	KSC1014
22.	HOLLOW DOWEL (4 REQ).....	KSC1033-149
23.	P/S PRESSURE OUT FITTING #8 ORB #6 JIC.....	KSM1017
24.	MOUNTING SEPARATOR PLATE.....	KSC1020
25.*	FUEL PUMP GEROTER SET FOR PUMPS	
	KSC1062-002 (1/4").....	KSM1023-250
	KSC1062-004 (5/16").....	KSM1023-312
26.	FUEL SECTION SPACER O-RING (2 REQ).....	KSM1020-037
27.*	FUEL SECTION SPACER (BRONZE) FOR PUMP	
	KSC1062-002 (1/4").....	KSC1041-250
	KSC1062-004 (5/16").....	KSC1041-312
28.	FUEL PUMP MANIFOLD (INCLUDES SEAT).....	KSC1046
29.	FUEL BYPASS VALVE POPPET.....	KSC1029
30.	FUEL BYPASS VALVE SPRING.....	KSC1015
31.	FUEL PILL	
	.120 ORFICE.....	KSC1026-120
	.140 ORFICE.....	KSC1026-140
	.160 ORFICE.....	KSC1026-160
	.180 ORFICE.....	KSC1026-180
	.200 ORFICE.....	KSC1026-200
	.220 ORFICE.....	KSC1026-220
	.240 ORFICE.....	KSC1026-240
	BLANK-NO ORFICE.....	KSC1026-000
32.	FUEL BYPASS VALVE FITTING PILL O-RING.....	KSM1020-011
33.	FUEL BYPASS VALVE FITTING.....	KSC1051
34.	5/16 X 18 X 3 3/4 SHCS ASSY BOLT (4 REQ).....	KSM1005-375
35a.	FUEL PRESSURE OUT FITTING #6 ORB #8 JIC.....	KSM1060
35b.	OPTIONAL #6 ORB #6 JIC.....	KSM1016

*These items are tolerance matched and are recommended to be purchased as a set.

Tandem Pump Rebuild / Seal Kit for SN's Up To 5266 (Includes #3, #5, #6, #8, #13, #26).....KSC1052B
 Tandem Pump Rebuild / Seal Kit for SN's 5267 & Up (Includes #3, #5, #6, #8, #13, #26).....KSC1076B

STEERING GEARS

TANDEM PUMPS

FUEL PUMPS

POWER STEERING PUMPS

ACCESSORIES & FLUIDS

WATER PUMPS FRONT COVERS

SERVICE

TECHNICAL INFO