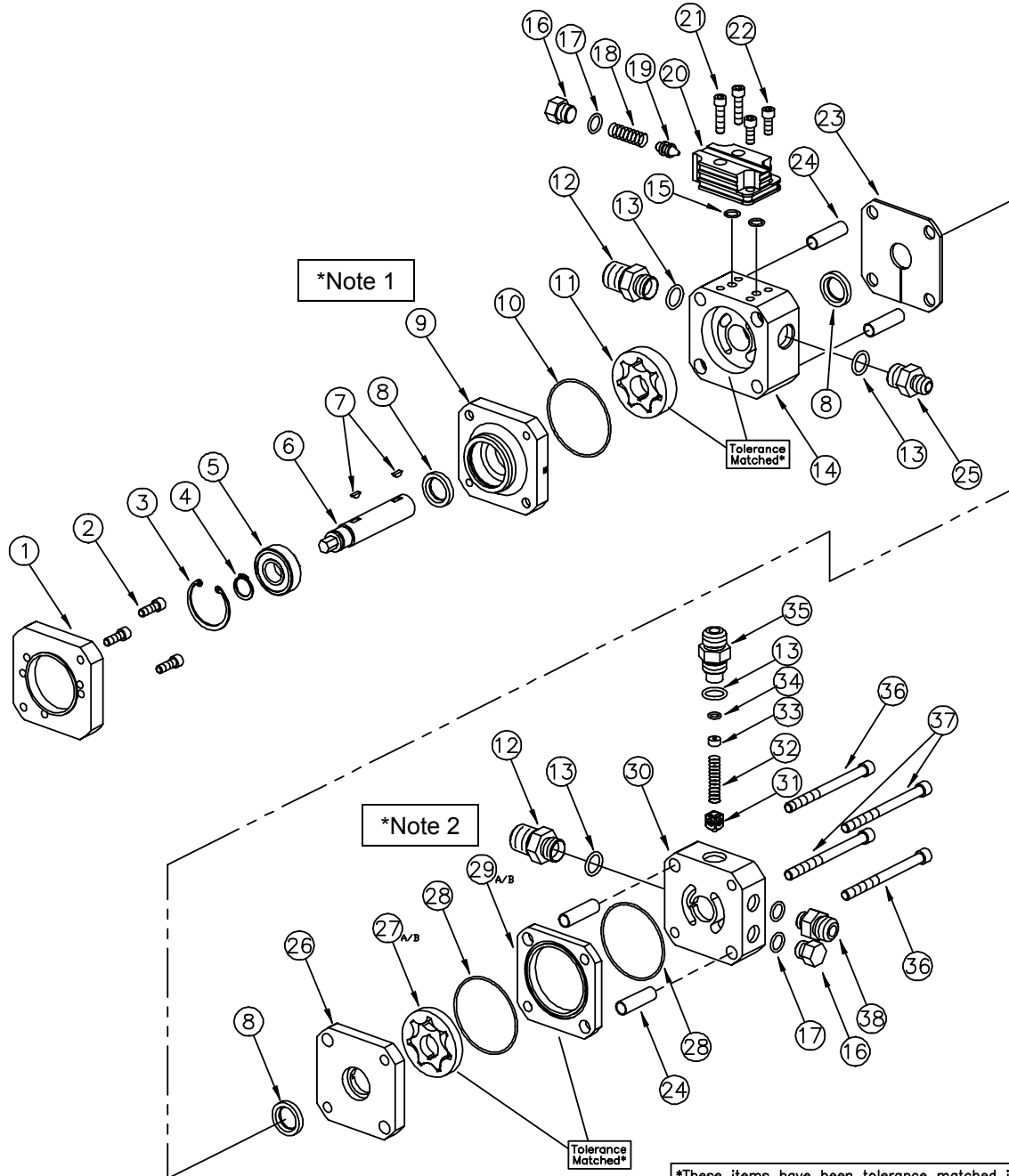


# Technical Information

## KSC1062-XXX Direct Drive Tandem Pump



\*It is critical to assemble the components in the correct orientation as shown in order to avoid seal damage.  
 \*Note 1: Pump SN# should be oriented towards top of pump with "notch" positioned towards pressure fitting.  
 \*Note 2: Fuel section eccentric should be located towards top of pump as shown (Item #29).

Tandem Pump Rebuild / Seal Kit for SN's Up To 5266 (Includes #5, #7, #8, #10, #15, #28).....KSC1052B  
 Tandem Pump Rebuild / Seal Kit for SN's 5267 & Up (Includes #5, #7, #8, #10, #15, #28).....KSC1076B

# Technical Information

ITEM	DESCRIPTION.....	PART#
1.	MOUNTING ADAPTOR .....	KSC 1019
2.	¼ X 20 X ¾ SHCS MTG. BOLTS ( 3 REQ ) .....	KSM 1003-075
3.	INTERNAL SNAP RING – PUMP .....	KSM 1026-156
4.	EXTERNAL HD SNAP RING .....	KSM 1027-066
5.	DRIVE SHAFT BALL BEARING .....	KSM 1039
6.	DIRECT DRIVE SHAFT ( 3/8 HEX ) .....	KSC 1042
7.	WOODRUFF KEY - PUMP .....	KSM 1030-213
8.	SHAFT SEALS (3 REQ) .....	KSM1037 (S/N UP TO 5266) KSM1110 (S/N 5267 AND LATER)
9.	P/S BEARING SECTION .....	KSC 1028
10.	P/S BEARING SECTION O’RING .....	KSM 1020-038
11.*	P/S GEROTOR PUMPING ASSEMBLY.....	KSM 1023-500
12.	#8 ORB - #10 JIC FITTING (2 REQ) .....	KSM 1059
13.	#8 O’RING ( 3 REQ ) .....	KSM 1021-908
14.*	POWER STEERING PUMP BODY .....	KSC 1010
15.	MOUNTED VALVE MTG O’RING ( 2 REQ ) .....	KSM 1020-013
16.	RELIEF VALVE CAP ( #6 ORB ) ( 2 REQ ).....	KSM 1019
17.	#6 O’RING ( 3 REQ ) .....	KSM 1021-906
18.	RELIEF VALVE SPRING .....	KSC 1023
19.	RELIEF VALVE POPPET .....	KSC 1031
20.	RELIEF VALVE BODY.....	KSC 1025
21.	RELIEF VALVE BODY BOLT ( 2 REQ ) .....	KSM 1004-100
22.	¼ 28 X 1 SHCS RELIEF VALVE BODY BOLT ( 2 REQ ) .....	KSM 1004-062
23.	INSULATOR PLATE .....	KSC 1014
24.	HOLLOW DOWEL ( 4 REQ ) .....	KSC 1033-149
25.	P/S PRESS. OUT FITTING #8 ORB - #6 JIC.....	KSM 1017
26.	SEPARATOR PLATE .....	KSC 1045
27A.*	FUEL PUMP GEROTOR SET* (1/4") .....	KSM 1023-250
	(FOR KSC 1062-002 PUMPS)	
27B.*	FUEL PUMP GEROTOR SET* (5/16") .....	KSM 1023-312
	(FOR KSC 1062-004 PUMPS)	
28.	FUEL SECTION SPACER O’RING ( 2 REQ ).....	KSM 1020-037
29A.*	FUEL SECTION SPACER ( BRONZE )*( 1/4") .....	KSC 1041-250
	(FOR KSC 1062-002 PUMPS)	
29B.*	FUEL SECTION SPACER ( BRONZE )*( 5/16") .....	KSC 1041-312
	(FOR KSC 1062-004 PUMPS)	
30.	FUEL PUMP MANIFOLD ( INCLUDES SEAT ).....	KSC 1046
31.	FUEL BYPASS POPPET .....	KSC 1029
32.	FUEL BYPASS SPRING.....	KSC 1015
33.	FUEL PILL	
	.120 ORFICE.....	KSC1026-120
	.140 ORFICE.....	KSC1026-140
	.160 ORFICE.....	KSC1026-160
	.180 ORFICE.....	KSC1026-180
	.200 ORFICE.....	KSC1026-200
	.220 ORFICE.....	KSC1026-220
	.240 ORFICE.....	KSC1026-240
	BLANK-NO ORFICE .....	KSC1026-000
34.	FUEL BYPASS VALVE O’RING .....	KSM 1020-011
35.	FUEL BYPASS VALVE FITTING (#8) .....	KSC 1051
36.	5/16 X 18 X 4 1/4 SHCS ASSY BOLT ( 2 REQ ).....	KSM 1005-425
37.	5/16 X 18 X 3 3/4 SHCS ASSY BOLT ( 2 REQ ).....	KSM 1005-375
38.	FUEL PRESS. OUT FITTING #6 ORB-#8 JIC .....	KSM 1060

STEERING GEARS

TANDEM PUMPS

FUEL PUMPS

POWER STEERING PUMPS

ACCESSORIES & FLUIDS

WATER PUMPS FRONT COVERS

SERVICE

TECHNICAL INFO