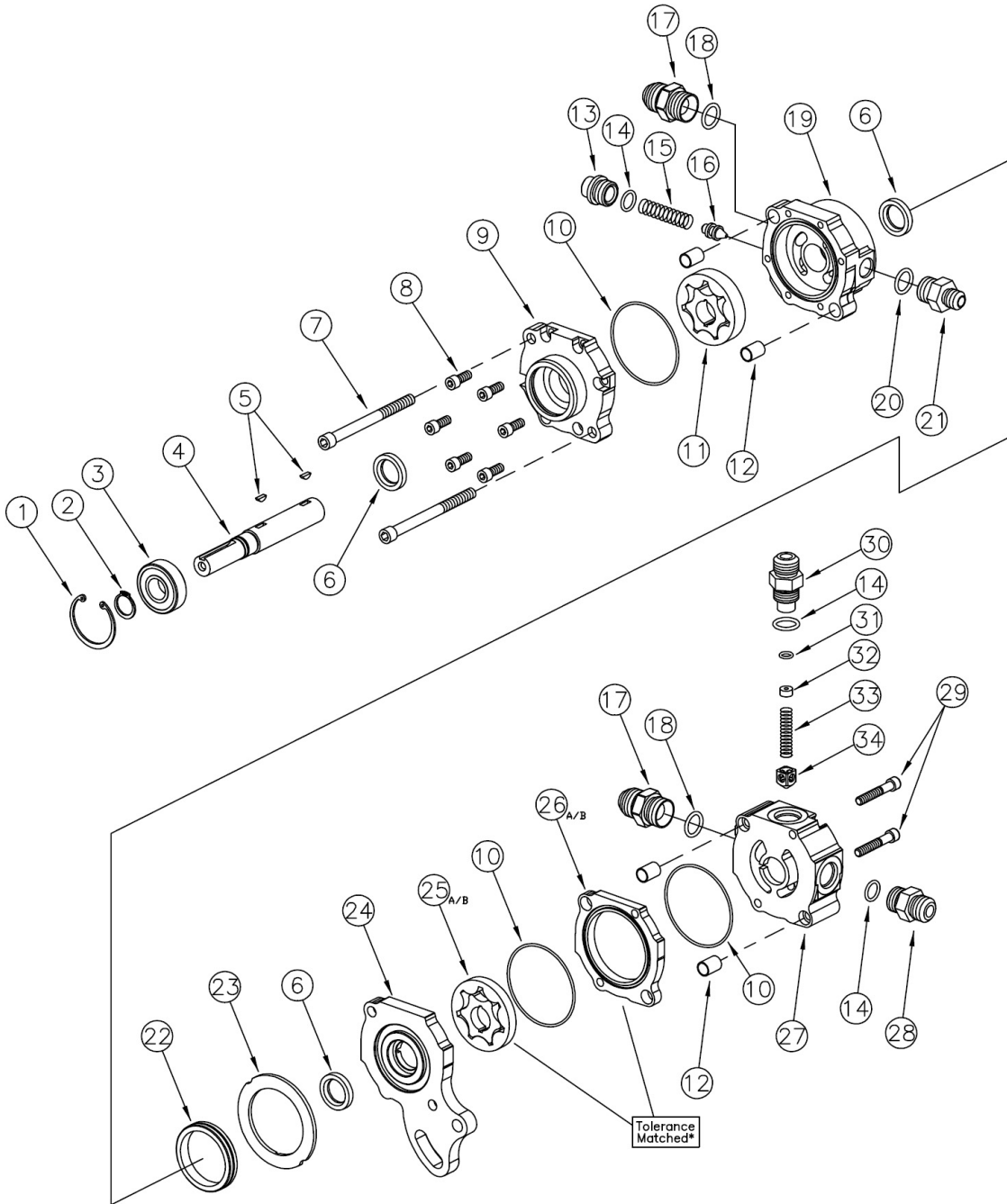


# Technical Information

## KSC1064-XXX Belt Drive TandemX Pump



\*These items have been tolerance matched in the assembly process and are recommended to be purchased as a mated set.

# Technical Information

ITEM	DESCRIPTION.....	PART #
1.	SHAFT & BEARING RETAINING RING .....	KSM1026-156
2.	DRIVE SHAFT BEARING RETAINING RING .....	KSM1027-066
3.	DRIVE SHAFT BALL BEARING .....	KSM1039
4.	BELT DRIVE SHAFT .....	KSC1007
5.	PUMP WOODRUFF KEY (2 REQ).....	KSM1030-213
6.	SHAFT SEALS (3 REQ) .....	KSM1110
7.	5/16-18 UNC X 3-3/4" SHCS ASSY BOLT (2 REQ).....	KSM1005-375
8.	1/4-20 UNC X 5/8" SHCS (6 REQ) .....	KSM1003-062
9.	HPD BEARING SECTION .....	KSC1064
10.	BEARING & FUEL SECTION O-RING (3 REQ).....	KSM1020-037
11.	P/S GEROTER PUMPING ASSEMBLY .....	KSM1023-500
12.	HOLLOW DOWELL (4 REQ) .....	KSC1033-060
13.	RELIEF VALVE CAP (8 ORB).....	KSM1066
14.	#8 O-RING (3 REQ).....	KSM1021-908
15.	RELIEF VALVE SPRING .....	KSC1023
16.	RELIEF VALVE POPPET .....	KSC1031
17.	INLET FITTING #10 ORB-#10 JIC (2 REQ).....	KSM1073
18.	#10 O-RING (2 REQ).....	KSM1021-910
19.	HPD DOUBLE ENDED PUMP BODY .....	KSC1065
20.	#6 O-RING .....	KSM1021-906
21.	PRESSURE FITTING #6 ORB-#6 JIC.....	KSM1016
22.	PRIMARY DOWELL .....	KSC1018
23.	INSULATOR PLATE .....	KSC1013
24.	BELT DRIVE SEPERATOR .....	KSC1024
25.*	FUEL PUMP GEROTER SET FOR PUMPS	
	KSC1064-002 (1/4").....	KSM1023-250
	KSC1064-004 (5/16").....	KSM1023-312
26.*	FUEL SECTION SPACER (BRONZE) FOR PUMP	
	KSC1064-002 (1/4").....	KSC1040-250
	KSC1064-004 (5/16").....	KSC1040-312
27.	FUEL PUMP MANIFOLD (INCLUDES SEAT).....	KSC1048
28.	PRESSURE FITTING #8 ORB-#8 JIC.....	KSM1018
29.	1/4-20 X 1-1/2" SHCS ASSY BOLT (2 REQ).....	KSM1003-150
30.	FUEL BYPASS VALVE FITTING.....	KSC1051
31.	FUEL BYPASS VALVE FITTING PILL O-RING .....	KSM1020-011
32.	FUEL PILL	
	.120 ORFICE.....	KSC1026-120
	.140 ORFICE.....	KSC1026-140
	.160 ORFICE.....	KSC1026-160
	.180 ORFICE.....	KSC1026-180
	.200 ORFICE.....	KSC1026-200
	.220 ORFICE.....	KSC1026-220
	.240 ORFICE.....	KSC1026-240
	BLANK-NO ORFICE .....	KSC1026-000
33.	FUEL BYPASS VALVE SPRING .....	KSC1015
34.	FUEL BYPASS VALVE POPPET .....	KSC1029

\*These items are tolerance matched and are recommended to be purchased as a set.

TandemX Pump Rebuild / Seal Kit (Includes #3, #5, #6, #10).....KSC1077B

STEERING GEARS

TANDEM PUMPS

FUEL PUMPS

POWER STEERING PUMPS

ACCESSORIES & FLUIDS

WATER PUMPS FRONT COVERS

SERVICE

TECHNICAL INFO