

Technical Information

KSC1065-XXX Direct Drive TandemX Pump

STEERING GEARS

TANDEM PUMPS

FUEL PUMPS

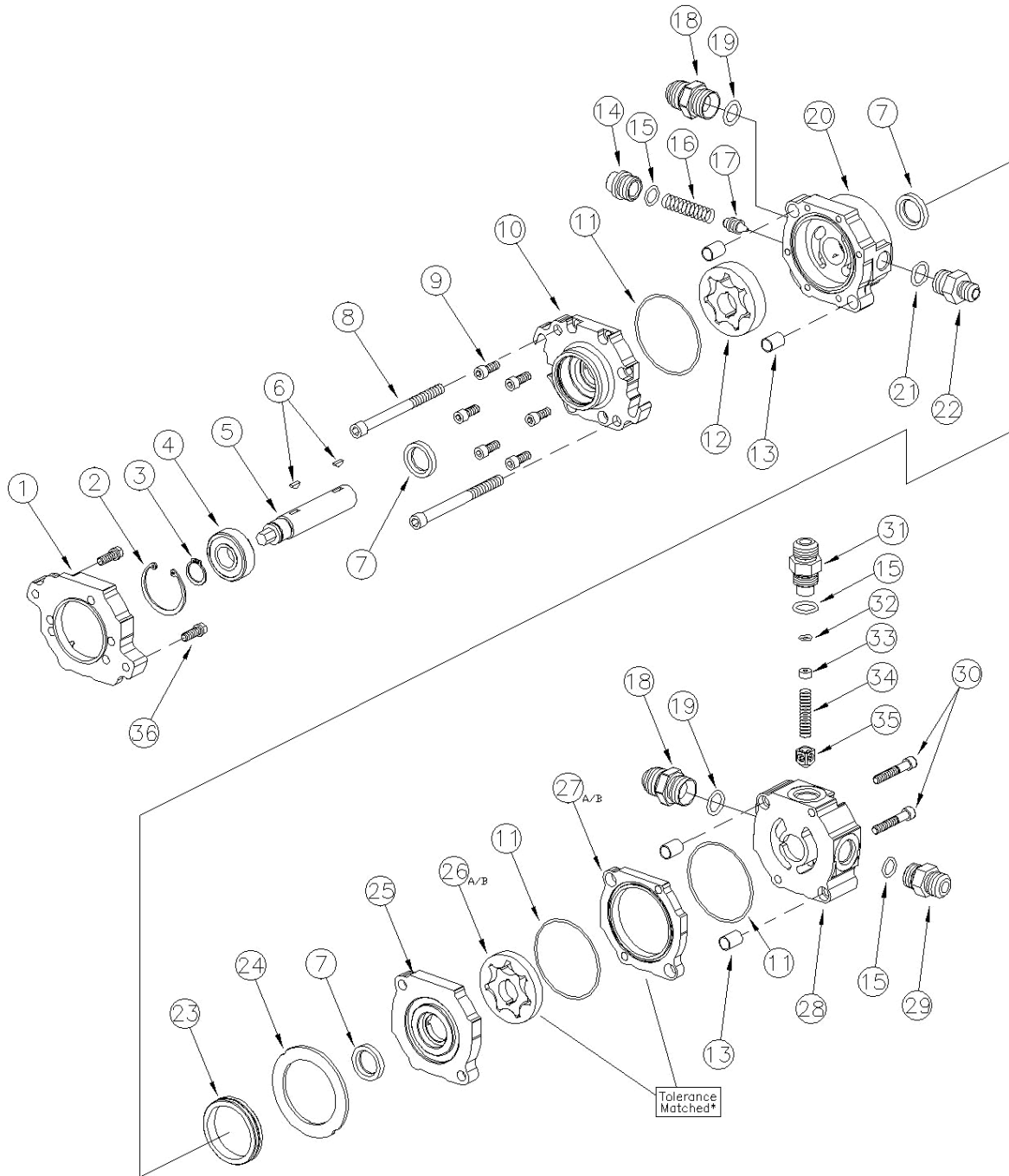
POWER STEERING PUMPS

ACCESSORIES & FLUIDS

WATER PUMPS FRONT COVERS

SERVICE

TECHNICAL INFO



*These items have been tolerance matched in the assembly process and are recommended to be purchased as a mated set.

Technical Information

ITEM	DESCRIPTION.....	PART #
1.	PUMP ADAPTOR	KSC1036
2.	SHAFT & BEARING RETAINING RING.....	KSM1026-156
3.	DRIVE SHAFT BEARING RETAINING RING	KSM1027-066
4.	DRIVE SHAFT BALL BEARING	KSM1039
5.	DIRECT DRIVE SHAFT (3/8" HEX).....	KSC1042
6.	PUMP WOODRUFF KEY (2 REQ).....	KSM1030-213
7.	SHAFT SEALS (3 REQ)	KSM1110
8.	5/16-18 UNC X 3-3/4" SHCS ASSY BOLT (2 REQ).....	KSM1005-375
9.	1/4-20 UNC X 5/8" SHCS (6 REQ)	KSM1003-062
10.	DIRECT DRIVE BEARING SECTION	KSC1035
11.	BEARING & FUEL SECTION O-RING (3 REQ).....	KSM1020-037
12.	P/S GEROTER PUMPING ASSEMBLY	KSM1023-500
13.	HOLLOW DOWELL (4 REQ).....	KSC1033-060
14.	RELIEF VALVE CAP (8 ORB).....	KSM1066
15.	#8 O-RING (3 REQ).....	KSM1021-908
16.	RELIEF VALVE SPRING	KSC1023
17.	RELIEF VALVE POPPET	KSC1031
18.	INLET FITTING #10 ORB-#10 JIC (2 REQ).....	KSM1073
19.	#10 O-RING (2 REQ).....	KSM1021-910
20.	HPD DOUBLE ENDED PUMP BODY	KSC1065
21.	#6 O-RING	KSM1021-906
22.	PRESSURE FITTING #6 ORB-#6 JIC.....	KSM1016
23.	PRIMARY DOWELL	KSC1018
24.	INSULATOR PLATE	KSC1013
25.	DIRECT DRIVE SEPERATOR	KSC1030
26.*	FUEL PUMP GEROTER SET FOR PUMPS	
	KSC1064-002 (1/4").....	KSM1023-250
	KSC1064-004 (5/16").....	KSM1023-312
27.*	FUEL SECTION SPACER (BRONZE) FOR PUMP	
	KSC1064-002 (1/4").....	KSC1040-250
	KSC1064-004 (5/16").....	KSC1040-312
28.	FUEL PUMP MANIFOLD (INCLUDES SEAT).....	KSC1048
29.	PRESSURE FITTING #8 ORB-#8 JIC.....	KSM1018
30.	1/4-20 X 1-1/2" SHCS ASSY BOLT (2 REQ).....	KSM1003-150
31.	FUEL BYPASS VALVE FITTING.....	KSC1051
32.	FUEL BYPASS VALVE FITTING PILL O-RING	KSM1020-011
33.	FUEL PILL	
	.120 ORFICE.....	KSC1026-120
	.140 ORFICE.....	KSC1026-140
	.160 ORFICE.....	KSC1026-160
	.180 ORFICE.....	KSC1026-180
	.200 ORFICE.....	KSC1026-200
	.220 ORFICE.....	KSC1026-220
	.240 ORFICE.....	KSC1026-240
	BLANK-NO ORFICE	KSC1026-000
34.	FUEL BYPASS VALVE SPRING	KSC1015
35.	FUEL BYPASS VALVE POPPET	KSC1029
36.	D/D PUMP MOUNTING SCREWS	KSM1005-100

*These items are tolerance matched and are recommended to be purchased as a set.

TandemX Pump Rebuild / Seal Kit (Includes #4, #6, #7, #11).....KSC1077B

STEERING GEARS

TANDEM PUMPS

FUEL PUMPS

POWER STEERING PUMPS

ACCESSORIES & FLUIDS

WATER PUMPS FRONT COVERS

SERVICE

TECHNICAL INFO